

# NEON<sup>®</sup> WiFi Mapper

## Geolocation for WiFi Mapping Applications

NEON<sup>®</sup> WiFi Mapper enables simple and fast 3D WiFi site survey and heatmap analysis. This solution is ideal for measuring, troubleshooting, and documenting RF coverage and performance of 802.11 wireless LANs. NEON WiFi Mapper simplifies and dramatically reduces the time required to validate WiFi coverage by automatically geo-referencing WiFi signal strength and providing 3D visualization.

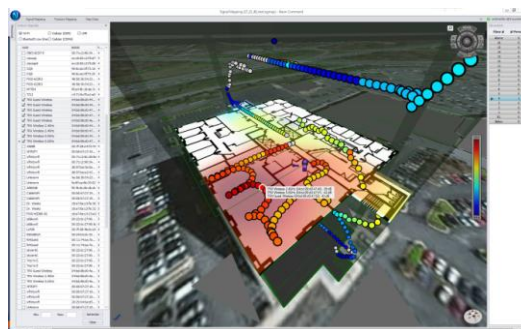
NEON WiFi Mapper provides many benefits:

- Eliminates the need to manually perform "check-ins" at each test point
- Provides vastly more data than is possible with manual processes
- Removes typical data recording errors caused by "guesstimating" locations
- Delivers actionable data in areas not easily analyzed (stairways, elevators)
- Enables quick analysis of signal coverage and faster problem resolution
- Provides color-graded measurement results in 3D visualizer

The NEON WiFi Mapper application provides, for the first time, an automatic indoor tracking technology that is specifically optimized for indoor test and measurement applications. Deployed with only a small, wearable accessory and an Android device, it is the ideal solution for professionals who conduct testing in complex buildings and campuses, including enterprise IT managers, technicians, and indoor wireless network installers.



NEON Tracking Unit



3D Visualization of WiFi Mapper Data



NEON WiFi Mapper  
Android UI



### Key Features

#### Multi-floor Site Survey

Real time seamless multi - floor passive WiFi, BLE, and LTE site survey.

#### Signal Strength Analysis

Identify coverage areas and drop out spots in an RF environment.

#### Collaborative Site Surveys

Site surveys are stored in a cloud account. Combine multiple site surveys to get a complete picture of an RF environment.

#### Compare Heat Maps

Compare heat maps to show network changes.

#### Heatmap Export

Automatically generate a heat map image report.

#### Rapid 3D Map Creation

Simple PC-based tool supports rapid creation of 3D building maps (including floor plan import).

Contact Us:  
[info@trxsystems.com](mailto:info@trxsystems.com)  
 (301) 313-0053  
[www.trxsystems.com](http://www.trxsystems.com)